

BID TABULATION FOR:

CONSTRUCTION OF WATER, SANITARY SEWER AND DRAINAGE FACILITIES & PAVING AND APPURTENANCES TO SERVE MILL CREEK ESTATES SECTION 8 TO SERVE MILL CREEK ESTATES SECTION 8
MONTGOMERY COUNTY MUNICIPAL UTILITY DISTRICT NO. 165
CITY OF MAGNOLIA E.T.J., MONTGOMERY COUNTY, TEXAS
NOVEMBER 22, 2024
LJA ENGINEERING, INC.
E. MURPHY
NOVEMBER 22, 2024
1019-3081, 1019-3082 (9.2)

BID OPENING DATE:
BID OPENING LOCATION:
TABULATION BY:
TABULATION DATE:
LJA JOB NO.

BIDDER'S NAME	TOTAL AMOUNT BID	
1) FELLERS AND CLARK LP	\$1,790,500.00	70/80
2) LEXTON CONSTRUCTION, LLC	\$1,846,614.47	80/90
3) PRECISE SERVICES INC.	\$2,039,795.25	90/120



Seth Harvey 11/25/2024

I, Seth Harvey, PE, hereby certify these bid tabulations to be true and correct.

LJA Engineering, Inc.

BID TABULATION FOR:

BID OPENING DATE:
BID OPENING LOCATION:
TABULATION BY:
TABULATION DATE:
LJA JOB NO.

CONSTRUCTION OF WATER, SANITARY SEWER AND DRAINAGE FACILITIES & PAVING AND APPURTENANCES TO SERVE MILL CREEK ESTATES S TO SERVE MILL CREEK ESTATES SECTION 8
 MONTGOMERY COUNTY MUNICIPAL UTILITY DISTRICT NO. 165
 CITY OF MAGNOLIA E.T.J., MONTGOMERY COUNTY, TEXAS
 NOVEMBER 22, 2024
 LJA ENGINEERING, INC.
 E. MURPHY
 NOVEMBER 22, 2024
 1019-3081, 1019-3082 (9.2)

ITEM	DESCRIPTION	UNIT	QTY	1) FELLERS AND CLARK LP		2) LEXTON CONSTRUCTION, LLC		3) PRECISE SERVICES INC.	
				UNIT COST	TOTAL COST	UNIT COST	TOTAL COST	UNIT COST	TOTAL COST
WATER ITEMS									
1	8" PVC WATER PIPE, C-900, DR 18, CLASS 235, ALL DEPTHS, INCLUDES ALL FITTINGS (TEES, BENDS, TRACER WIRE, CONNECTORS, THRUST BLOCKS, REDUCERS, ETC), BLUE IN COLOR, COMPLETE IN PLACE	LF	2940	\$36.55	\$107,457.00	\$33.50	\$98,490.00	\$40.00	\$117,600.00
2	TRENCH SAFETY SYSTEM, ALL DEPTHS, COMPLETE IN PLACE	LF	2940	\$0.10	\$294.00	\$0.10	\$294.00	\$0.10	\$294.00
3	FLUSHING VALVE UNIT, ALL DEPTHS, INCLUDES APPROPRIATE TEE AND RESTRAINED JOINT FITTINGS, 6" VALVE & BOX 6" LEAD AND FIRE HYDRANT, BLIND FLANGES, THRUST BLOCKS, AND ADJUSTMENTS AS NECESSARY, COMPLETE IN PLACE	EA	7	\$5,822.70	\$40,758.90	\$5,983.00	\$41,881.00	\$8,000.00	\$56,000.00
4	8" AWWA GATE VALVE AND BOX, ALL DEPTHS, INCLUDES MARKER, OPEN COUNTERCLOCKWISE, COMPLETE IN PLACE	EA	8	\$2,033.25	\$16,266.00	\$2,246.00	\$17,968.00	\$2,450.00	\$19,600.00
5	CONNECT PROPOSED 8" WATER LINE TO EXISTING 8" WATER LINE INCLUDES REMOVING EXISTING PLUG AND CLAMP AND BLOW-OFF VALVE AND ALL NECESSARY ADAPTERS AND CONNECTORS, WET CONNECTION, COMPLETE IN PLACE	EA	1	\$172.40	\$172.40	\$598.50	\$598.50	\$660.00	\$660.00
6	SHORT SIDE SINGLE SERVICE LEAD, 1" (CTS POLYETHYLENE, SDR-9) WATER SERVICE, CURB STOP, MARKER, AND ALL NECESSARY CONNECTORS, PLUGS AND TAPS, CONTRACTOR SHALL TERMINATE ALL LEADS WITH 3/4" THREAD TO METER ADAPTOR, COMPLETE IN PLACE	EA	39	\$417.25	\$16,272.75	\$669.50	\$26,110.50	\$855.00	\$33,345.00
7	LONG SIDE SINGLE SERVICE LEAD, 1" (CTS POLYETHYLENE, SDR-9) WATER SERVICE, CURB STOP, MARKER, AND ALL NECESSARY CONNECTORS, PLUGS AND TAPS, CONTRACTOR SHALL TERMINATE ALL LEADS WITH 3/4" THREAD TO METER ADAPTOR, COMPLETE IN PLACE	LF	2000	\$22.30	\$44,600.00	\$19.00	\$38,000.00	\$27.50	\$55,000.00
8	METER BOX, (DFW PLASTICS, INC., MODEL NO. DFW 1300.12IT), OR APPROVED EQUAL, COMPLETE IN PLACE	EA	75	\$40.25	\$3,018.75	\$142.00	\$10,650.00	\$150.00	\$11,250.00
9	PLUG AND CLAMP WITH 2" BLOW-OFF VALVE AND BOX, ALL SIZES AND DEPTHS, INCLUDES MARKER, COMPLETE IN PLACE	EA	2	\$574.70	\$1,149.40	\$2,236.00	\$4,472.00	\$2,750.00	\$5,500.00
WATER ITEMS SUBTOTAL:					\$229,989.20		\$238,464.00		\$299,249.00
SANITARY SEWER ITEMS									
1	8" PVC SEWER PIPE, ASTM D-2241, SDR 26, 0' - 8' CUT, GREEN IN COLOR, CONNECTOR, INCLUDES TRACER WIRE, COMPLETE IN PLACE	LF	610	\$40.40	\$24,644.00	\$36.50	\$22,265.00	\$41.00	\$25,010.00
2	8" PVC SEWER PIPE, ASTM D-2241, SDR 26, 8' - 12' CUT, GREEN IN COLOR, CONNECTOR, INCLUDES TRACER WIRE, COMPLETE IN PLACE	LF	1247	\$40.40	\$50,378.80	\$39.50	\$49,256.50	\$42.50	\$52,997.50
3	8" PVC SEWER PIPE, ASTM D-2241, SDR 26, 12' - 16' CUT, GREEN IN COLOR, CONNECTOR, INCLUDES TRACER WIRE, COMPLETE IN PLACE	LF	496	\$40.40	\$20,038.40	\$40.50	\$20,088.00	\$45.00	\$22,320.00
4	8" PVC SEWER PIPE, ASTM D-2241, SDR 26, 16' - 20' CUT, GREEN IN COLOR, CONNECTOR, INCLUDES TRACER WIRE, COMPLETE IN PLACE	LF	319	\$40.40	\$12,887.60	\$42.50	\$13,557.50	\$50.00	\$15,950.00
5	PRECAST STANDARD SANITARY SEWER MANHOLE 4-FOOT DIAMETER FOR 6"-24" SANITARY SEWER PIPES, 0'-8" DEPTH, INCLUDES PLASTIC INFLOW PROTECTORS, PROTECTIVE INTERIOR COATING (XYPEX ADMIX C-1000R, OR APPROVED EQUAL), TRACER WIRE AND ADJUSTMENTS, COMPLETE IN PLACE	EA	19	\$2,609.05	\$49,571.95	\$3,549.50	\$67,440.50	\$5,150.00	\$97,850.00
6	EXTRA-DEPTH FOR 4-FOOT DIAMETER SANITARY SEWER MANHOLE, (GREATER THAN 8' DEPTH), COMPLETE IN PLACE	VF	81	\$132.20	\$10,708.20	\$213.00	\$17,253.00	\$345.00	\$27,945.00
7	"SHORT SIDE" DOUBLE OR SINGLE 6" PVC PIPE SERVICE LEADS, ASTM D-2241, SDR 26, ALL DEPTHS, INCLUDING PIPE, CEMENT STABILIZED SAND BACKFILL, WYE, PLUG, MARKER, ANY NECESSARY FITTINGS, STACKS, RISERS, TRACER WIRE, ETC., GREEN IN COLOR, COMPLETE IN PLACE	EA	14	\$1,175.15	\$16,452.10	\$3,194.50	\$44,723.00	\$2,500.00	\$35,000.00

BID TABULATION FOR:

BID OPENING DATE:
BID OPENING LOCATION:
TABULATION BY:
TABULATION DATE:
LJA JOB NO.

CONSTRUCTION OF WATER, SANITARY SEWER AND DRAINAGE FACILITIES & PAVING AND APPURTENANCES TO SERVE MILL CREEK ESTATES S
 TO SERVE MILL CREEK ESTATES SECTION 8
 MONTGOMERY COUNTY MUNICIPAL UTILITY DISTRICT NO. 165
 CITY OF MAGNOLIA E.T.J., MONTGOMERY COUNTY, TEXAS
 NOVEMBER 22, 2024
 LJA ENGINEERING, INC.
 E. MURPHY
 NOVEMBER 22, 2024
 1019-3081, 1019-3082 (9.2)

ITEM	DESCRIPTION	UNIT	QTY	1) FELLERS AND CLARK LP		2) LEXTON CONSTRUCTION, LLC		3) PRECISE SERVICES INC.	
				UNIT COST	TOTAL COST	UNIT COST	TOTAL COST	UNIT COST	TOTAL COST
8	"LONG SIDE" DOUBLE OR SINGLE 6" PVC PIPE SERVICE LEADS, ASTM D-2241, SDR 26, ALL DEPTHS, INCLUDING PIPE, CEMENT STABILIZED SAND BACKFILL, WYE, PLUG, MARKER, ANY NECESSARY FITTINGS, STACKS, RISERS, TRACER WIRE, ETC., GREEN IN COLOR, COMPLETE IN PLACE	LF	1015	\$49.40	\$50,141.00	\$60.00	\$60,900.00	\$72.50	\$73,587.50
9	TRENCH SAFETY SYSTEM, ALL DEPTHS, COMPLETE IN PLACE	LF	3687	\$0.10	\$368.70	\$1.00	\$3,687.00	\$0.10	\$368.70
10	STANDARD SANITARY MANHOLE DROP, COMPLETE IN PLACE	EA	2	\$847.10	\$1,694.20	\$811.50	\$1,623.00	\$1,200.00	\$2,400.00
11	SANITARY MANHOLE DROP EXTRA DEPTH OVER 3', COMPLETE IN PLACE	EA	11	\$34.50	\$379.50	\$90.50	\$995.50	\$17.50	\$192.50
12	CORE INTO EXISTING SANITARY SEWER MANHOLE AND CONNECT PROPOSED 8" SANITARY SEWER, INCLUDES BYPASS PUMPING AS NECESSARY, COMPLETE IN PLACE	EA	1	\$2,126.35	\$2,126.35	\$1,622.50	\$1,622.50	\$2,000.00	\$2,000.00
13	PLUG FOR SANITARY SEWER PIPE, ALL SIZES, ALL DEPTHS, COMPLETE IN PLACE	EA	1	\$80.45	\$80.45	\$319.50	\$319.50	\$250.00	\$250.00
14	POST-CONSTRUCTION CLEANING AND VIDEOTAPING OF SANITARY SEWER TRUNK LINE TO BE PROVIDED TO ENGINEER FOR ACCEPTANCE, COMPLETE IN PLACE	LF	2672	\$2.30	\$6,145.60	\$0.01	\$26.72	\$2.50	\$6,680.00
SANITARY SEWER ITEMS SUBTOTAL:					\$245,616.85		\$303,757.72		\$362,551.20
STORM SEWER ITEMS									
1	24" RCP, STORM SEWER, ASTM C-76, CLASS III, ALL CUTS, COMPLETE IN PLACE	LF	1200	\$87.65	\$105,180.00	\$81.00	\$97,200.00	\$90.00	\$108,000.00
2	30" RCP, STORM SEWER, ASTM C-76, CLASS III, ALL CUTS, COMPLETE IN PLACE	LF	250	\$105.20	\$26,300.00	\$101.50	\$25,375.00	\$115.00	\$28,750.00
3	36" RCP, STORM SEWER, ASTM C-76, CLASS III, ALL CUTS, COMPLETE IN PLACE	LF	240	\$144.15	\$34,596.00	\$141.00	\$33,840.00	\$150.00	\$36,000.00
4	42" RCP, STORM SEWER, ASTM C-76, CLASS III, ALL CUTS, COMPLETE IN PLACE	LF	36	\$188.45	\$6,784.20	\$187.50	\$6,750.00	\$210.00	\$7,560.00
5	48" RCP, STORM SEWER, ASTM C-76, CLASS III, ALL CUTS, COMPLETE IN PLACE	LF	516	\$222.85	\$114,990.60	\$223.00	\$115,068.00	\$230.00	\$118,680.00
6	54" RCP, STORM SEWER, ASTM C-76, CLASS III, ALL CUTS, COMPLETE IN PLACE	LF	98	\$322.45	\$31,600.10	\$322.50	\$31,605.00	\$335.00	\$32,830.00
7	REINFORCED CONCRETE PRECAST OR REINFORCED CONCRETE CAST-IN-PLACE TYPE "C" MANHOLE FOR 42" STORM SEWER AND SMALLER, ALL DEPTHS, INCLUDES ADJUSTMENTS, COMPLETE IN PLACE	EA	11	\$2,241.25	\$24,653.75	\$2,712.50	\$29,837.50	\$3,700.00	\$40,700.00
8	REINFORCED CONCRETE PRECAST OR REINFORCED CONCRETE CAST-IN-PLACE TYPE "C" MANHOLE WITH TYPE "E" INLET TOP OPEN ALL SIDES, FOR 42" STORM SEWER AND SMALLER, ALL DEPTHS, INCLUDES ADJUSTMENTS, COMPLETE IN PLACE	EA	1	\$4,597.50	\$4,597.50	\$4,386.00	\$4,386.00	\$9,000.00	\$9,000.00
9	REINFORCED CONCRETE PRECAST OR REINFORCED CONCRETE CAST-IN-PLACE TYPE "C" MANHOLE FOR 48" STORM SEWER AND LARGER, ALL DEPTHS, INCLUDES ADJUSTMENTS, COMPLETE IN PLACE	EA	5	\$4,321.65	\$21,608.25	\$3,498.50	\$17,492.50	\$9,250.00	\$46,250.00
10	STAGE I – REINFORCED CONCRETE PRECAST STANDARD CURB INLET, ALL DEPTHS, INCLUDES INLET PROTECTION BARRIER FOR STAGE I INLETS, COMPLETE IN PLACE	EA	19	\$1,074.65	\$20,418.35	\$1,419.50	\$26,970.50	\$2,150.00	\$40,850.00
11	STAGE II – REINFORCED CONCRETE PRECAST OR REINFORCED CONCRETE CAST-IN-PLACE STANDARD CURB INLET, COMPLETE IN PLACE	EA	19	\$2,390.70	\$45,423.30	\$1,921.50	\$36,508.50	\$2,000.00	\$38,000.00
12	TRENCH SAFETY SYSTEM, ALL DEPTHS, COMPLETE IN PLACE	LF	2340	\$0.10	\$234.00	\$1.00	\$2,340.00	\$0.10	\$234.00
13	BREAK INTO EXISTING STORM MANHOLE AND CONNECT STORM SEWER, ALL SIZES, ALL DEPTHS, COMPLETE IN PLACE	EA	3	\$3,275.70	\$9,827.10	\$897.50	\$2,692.50	\$6,500.00	\$19,500.00

BID TABULATION FOR:

BID OPENING DATE:
BID OPENING LOCATION:
TABULATION BY:
TABULATION DATE:
LJA JOB NO.

CONSTRUCTION OF WATER, SANITARY SEWER AND DRAINAGE FACILITIES & PAVING AND APPURTENANCES TO SERVE MILL CREEK ESTATES S
 TO SERVE MILL CREEK ESTATES SECTION 8
 MONTGOMERY COUNTY MUNICIPAL UTILITY DISTRICT NO. 165
 CITY OF MAGNOLIA E.T.J., MONTGOMERY COUNTY, TEXAS
 NOVEMBER 22, 2024
 LJA ENGINEERING, INC.
 E. MURPHY
 NOVEMBER 22, 2024
 1019-3081, 1019-3082 (9.2)

ITEM	DESCRIPTION	UNIT	QTY	1) FELLERS AND CLARK LP		2) LEXTON CONSTRUCTION, LLC		3) PRECISE SERVICES INC.	
				UNIT COST	TOTAL COST	UNIT COST	TOTAL COST	UNIT COST	TOTAL COST
14	REMOVE EXISTING E-INLET TOP AND REPLACE WITH TYPE "C" STORM SEWER MANHOLE TOP, COMPLETE IN PLACE	EA	2	\$1,465.45	\$2,930.90	\$1,825.50	\$3,651.00	\$2,450.00	\$4,900.00
15	REGRADE EXISTING 2' BOTTOM WIDTH SWALE TO E-INLET, COMPLETE IN PLACE	LF	125	\$11.50	\$1,437.50	\$8.10	\$1,012.50	\$13.50	\$1,687.50
STORM SEWER ITEMS SUBTOTAL:					\$450,581.55		\$434,729.00		\$532,941.50
PAVING ITEMS									
1	6-INCH REINFORCED CONCRETE PAVEMENT (3,000 PSI / 5 SACK CEMENT PER CUBIC YARD), COMPLETE IN PLACE	SY	8288	\$50.50	\$418,544.00	\$52.00	\$430,976.00	\$47.50	\$393,680.00
2	6 INCH STABILIZED SUBGRADE FOR 6-INCH PAVEMENT (MANIPULATION), COMPLETE IN PLACE	SY	8921	\$10.10	\$90,102.10	\$4.25	\$37,914.25	\$6.55	\$58,432.55
3	4-INCH X 12-INCH REINFORCED CONCRETE CURB (3,000 PSI), COMPLETE IN PLACE	LF	1673	\$4.05	\$6,775.65	\$3.50	\$5,855.50	\$4.00	\$6,692.00
4	6-INCH REINFORCED CONCRETE CURB (3,000 PSI), COMPLETE IN PLACE	LF	3956	\$4.05	\$16,021.80	\$3.50	\$13,846.00	\$4.00	\$15,824.00
5	HYDRATED LIME FOR SUBGRADE, (2% BY DRY WEIGHT) AS REQUIRED BY SOIL CONDITIONS AND APPROVED BY GEOTECHNICAL ENGINEER, COMPLETE IN PLACE	TON	88	\$202.00	\$17,776.00	\$380.00	\$33,440.00	\$340.00	\$29,920.00
6	FLY ASH FOR SUBGRADE, (8% BY DRY UNITY WEIGHT) AS REQUIRED BY SOIL CONDITIONS AND APPROVED BY GEOTECHNICAL ENGINEER, COMPLETE IN PLACE	TON	353	\$30.30	\$10,695.90	\$135.00	\$47,655.00	\$130.00	\$45,890.00
7	FINAL LOT AND RESERVE GRADING, COMPLETE IN PLACE	LS	1	\$29,997.00	\$29,997.00	\$50,000.00	\$50,000.00	\$16,500.00	\$16,500.00
8	REMOVAL AND DISPOSAL OF EXISTING BARRICADE, COMPLETE IN PLACE	EA	1	\$10.10	\$10.10	\$1.00	\$1.00	\$100.00	\$100.00
9	PERMANENT STANDARD TYPE III BARRICADE, COMPLETE IN PLACE	EA	2	\$1,515.00	\$3,030.00	\$1,200.00	\$2,400.00	\$1,300.00	\$2,600.00
10	PERMANENT TRAFFIC CONTROL DEVICES, (INCLUDING ALL TRAFFIC BUTTONS, PERMANENT STRIPING, AND PERMANENT SIGNAGE), COMPLETE IN PLACE	LS	1	\$7,777.00	\$7,777.00	\$7,025.00	\$7,025.00	\$6,400.00	\$6,400.00
11	STANDARD PAVEMENT HEADER, COMPLETE IN PLACE	LF	48	\$15.15	\$727.20	\$15.00	\$720.00	\$20.00	\$960.00
12	ROADWAY, LOT AND RESERVE EXCAVATION AND EMBANKMENT, INCLUDES STRIPPINGS, STOCKPILING OF STRIPPINGS, AND REAPPLICATION OF STRIPPINGS TO APPLICABLE AREAS, COMPLETE IN PLACE	CY	3100	\$6.05	\$18,755.00	\$5.85	\$18,135.00	\$6.75	\$20,925.00
13	EXCAVATION AND EMBANKMENT OF SIDE LOT SWALES, INCLUDES STRIPPINGS, STOCKPILING OF STRIPPINGS, AND REAPPLICATION OF STRIPPINGS TO APPLICABLE AREAS, COMPLETE IN PLACE	LF	7200	\$5.05	\$36,360.00	\$4.25	\$30,600.00	\$3.15	\$22,680.00
14	DUAL 6" SCHEDULE 40 PVC IRRIGATION SLEEVES (HORIZONTAL SLEEVE ONLY), NO SEPARATE PAY FOR VERTICAL SLEEVE, COMPLETE IN PLACE	LF	28	\$101.00	\$2,828.00	\$29.50	\$826.00	\$85.00	\$2,380.00
PAVING ITEMS SUBTOTAL:					\$659,399.75		\$679,393.75		\$622,983.55
MISCELLANEOUS ITEMS									
1	ADDITIONAL DUCTILE IRON FITTINGS, (TO BE USED ONLY AT THE WRITTEN DIRECTION OF THE ENGINEER), COMPLETE IN PLACE	TON	2	\$1,500.00	\$3,000.00	\$1,500.00	\$3,000.00	\$1,500.00	\$3,000.00
2	REINFORCED FILTER FABRIC FENCE, COMPLETE IN PLACE	LF	100	\$1.50	\$150.00	\$1.50	\$150.00	\$1.50	\$150.00
3	CEMENT STABILIZED SAND, 1.5 SACKS OF CEMENT PER CUBIC YARD OF MIX, TO BE USED ONLY AT THE WRITTEN DIRECTION OF THE ENGINEER, COMPLETE IN PLACE	TON	1	\$20.00	\$20.00	\$20.00	\$20.00	\$20.00	\$20.00

BID TABULATION FOR:

BID OPENING DATE:
BID OPENING LOCATION:
TABULATION BY:
TABULATION DATE:
LJA JOB NO.

CONSTRUCTION OF WATER, SANITARY SEWER AND DRAINAGE FACILITIES & PAVING AND APPURTENANCES TO SERVE MILL CREEK ESTATES S
 TO SERVE MILL CREEK ESTATES SECTION 8
 MONTGOMERY COUNTY MUNICIPAL UTILITY DISTRICT NO. 165
 CITY OF MAGNOLIA E.T.J., MONTGOMERY COUNTY, TEXAS
 NOVEMBER 22, 2024
 LJA ENGINEERING, INC.
 E. MURPHY
 NOVEMBER 22, 2024
 1019-3081, 1019-3082 (9.2)

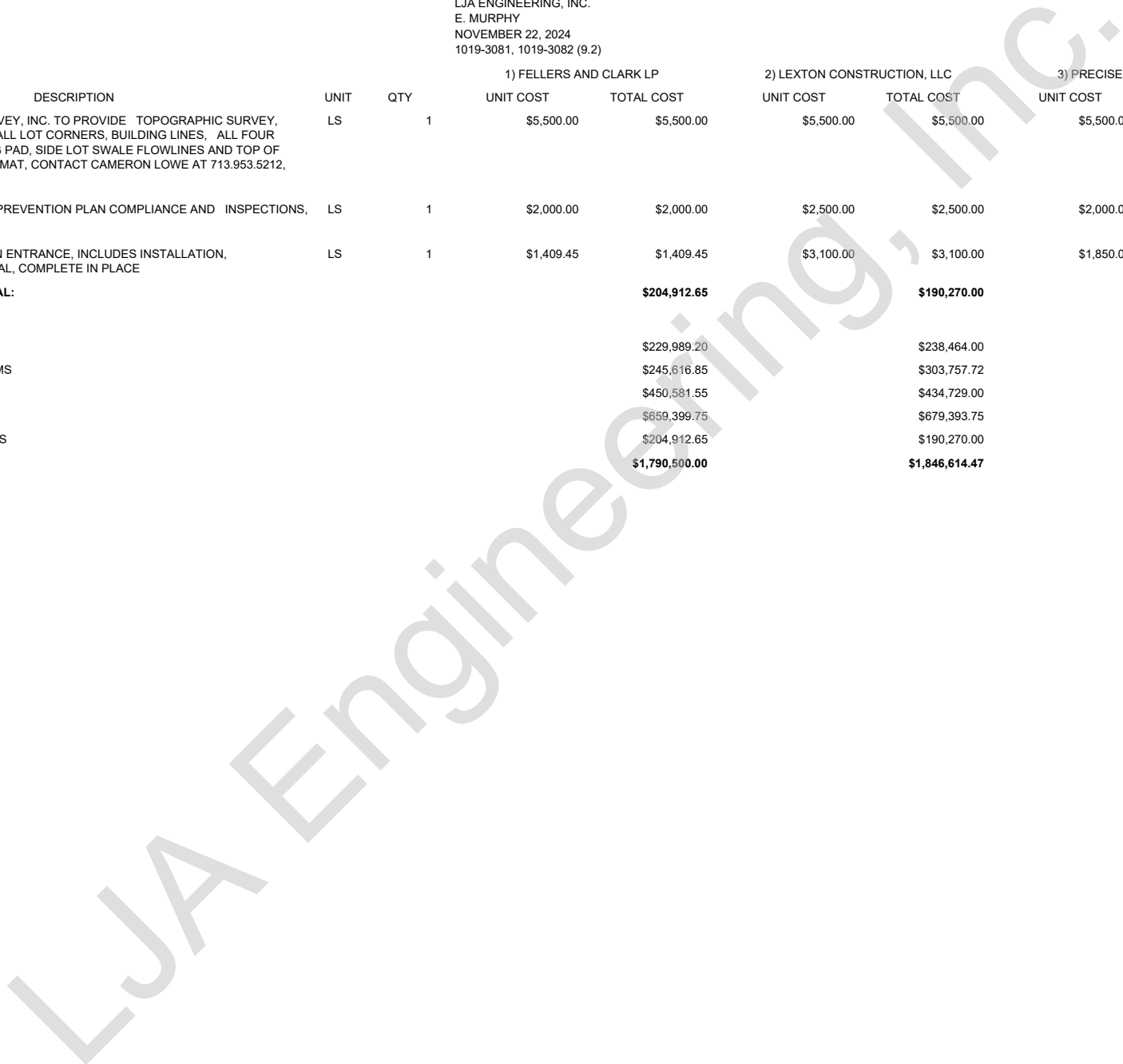
ITEM	DESCRIPTION	UNIT	QTY	1) FELLERS AND CLARK LP		2) LEXTON CONSTRUCTION, LLC		3) PRECISE SERVICES INC.	
				UNIT COST	TOTAL COST	UNIT COST	TOTAL COST	UNIT COST	TOTAL COST
4	CEMENT STABILIZED SAND, 2 SACKS OF CEMENT PER CUBIC YARD OF MIX, TO BE USED ONLY AT THE WRITTEN DIRECTION OF THE ENGINEER, COMPLETE IN PLACE	TON	1	\$20.00	\$20.00	\$20.00	\$20.00	\$20.00	\$20.00
5	STAGE II INLET PROTECTION BARRIERS (BURLAP BAG BARRIER), COMPLETE IN PLACE	EA	10	\$70.00	\$700.00	\$7.00	\$70.00	\$7.00	\$70.00
6	CLEARING AND GRUBBING, INCLUDES HAULING DEBRIS OFF-SITE, TO BE USED ONLY AT THE WRITTEN DIRECTION OF THE ENGINEER, COMPLETE EIN PLACE	AC	1	\$1,500.00	\$1,500.00	\$1,500.00	\$1,500.00	\$1,500.00	\$1,500.00
7	FLY ASH, COMPLETE IN PLACE	TON	50	\$100.00	\$5,000.00	\$135.00	\$6,750.00	\$130.00	\$6,500.00
8	UTILITY SPOILS (COMPACTED TO 95% STANDARD PROCTOR DENSITY) TO BE USED ON-SITE, INCLUDES HAULING, PLACEMENT AND COMPACTION, COMPLETE IN PLACE	LS	1	\$44,189.50	\$44,189.50	\$16,325.00	\$16,325.00	\$26,000.00	\$26,000.00
9	ADDITIONAL COST TO HAUL AND DISPOSE OF UTILITY SPOILS OFF-SITE BUT WITHIN DEVELOPMENT, NO MORE THAN 3,500 FEET, (TO BE USED ONLY AT THE WRITTEN DIRECTION OF THE ENGINEER), COMPLETE IN PLACE	CY	1000	\$1.15	\$1,150.00	\$5.25	\$5,250.00	\$12.00	\$12,000.00
10	SURFACE WATER CONTROL, INCLUDES PUMPING REQUIRED TO CONSTRUCT PROPOSED PROJECT, (TO BE USED ONLY AT THE WRITTEN DIRECTION OF THE ENGINEER), COMPLETE IN PLACE	LS	1	\$1,149.35	\$1,149.35	\$1,525.00	\$1,525.00	\$11,500.00	\$11,500.00
11	DEWATERING (GROUNDWATER CONTROL), INCLUDES CONVENTIONAL VACUUM TYPE WELL POINTS, INTERNAL SUMPS AND PUMPS, OR ANY TYPE OF PUMPING AS NECESSARY TO COMPLETE THE CONSTRUCTION OF THE PROJECT, (TO BE USED ONLY AT THE WRITTEN DIRECTION OF THE ENGINEER), COMPLETE IN PLACE	LF	2500	\$20.00	\$50,000.00	\$20.00	\$50,000.00	\$20.00	\$50,000.00
12	ADDITIONAL COST FOR BEDDING AND BACKFILL FOR UNSATISFACTORY SOIL CONDITIONS (WET SAND), (TO BE USED ONLY AT THE WRITTEN DIRECTION OF THE ENGINEER), COMPLETE IN PLACE	LF	2500	\$20.00	\$50,000.00	\$20.00	\$50,000.00	\$20.00	\$50,000.00
13	TEMPORARY TRAFFIC CONTROL DEVICES, INCLUDING ALL TRAFFIC BUTTONS, PAVEMENT STRIPING, STREET SIGNS AND TRAFFIC SIGNS, COMPLETE IN PLACE	LS	1	\$1,149.35	\$1,149.35	\$600.00	\$600.00	\$1,500.00	\$1,500.00
14	TRAFFIC BUTTONS, (TO BE USED ONLY AT THE WRITTEN DIRECTION OF THE ENGINEER), COMPLETE IN PLACE	EA	1	\$20.20	\$20.20	\$10.00	\$10.00	\$10.00	\$10.00
15	THERMOPLASTIC PAVEMENT MARKINGS, ALL WIDTHS, COMPLETE IN PLACE	LF	25	\$10.10	\$252.50	\$10.00	\$250.00	\$10.00	\$250.00
16	TURF ESTABLISHMENT OF SWALES AND AREAS STEEPER THAN 10:1, INCLUDES MOWING AND WATERING TO ACHIEVE 90% HOMOGENEOUS VEGETATION TO ACCEPT PROJECT FOR FINAL PAYMENT, COMPLETE IN PLACE	AC	1	\$1,702.30	\$1,702.30	\$1,850.00	\$1,850.00	\$2,500.00	\$2,500.00
17	BROADCAST SEEDING OF RESERVES, INCLUDES MOWING AND WATERING TO ACHIEVE 90% HOMOGENEOUS VEGETATION TO ACCEPT PROJECT FOR FINAL PAYMENT, (TO BE USED ONLY AT WRITTEN DIRECTION OF THE ENGINEER), COMPLETE IN PLACE	AC	13	\$400.00	\$5,200.00	\$850.00	\$11,050.00	\$1,300.00	\$16,900.00
18	ONE-TIME CONSTRUCTION STAKING TO BE PROVIDED BY LJA SURVEYING, INC. INCLUDES CONSTRUCTION AND CONTROL STAKING OF THE WSD, CONTACT CAMERON LOWE AT 713.953.5212, COMPLETE IN PLACE	LS	1	\$16,000.00	\$16,000.00	\$16,000.00	\$16,000.00	\$16,000.00	\$16,000.00
19	CONSTRUCTION STAKING TO BE PROVIDED BY LJA SURVEYING, INC. INCLUDES CONSTRUCTION AND CONTROL STAKING OF THE FOR PAVING AND GRADING, CONTACT CAMERON LOWE AT 713.953.5212, COMPLETE IN PLACE	LS	1	\$14,800.00	\$14,800.00	\$14,800.00	\$14,800.00	\$14,800.00	\$14,800.00

BID TABULATION FOR:

BID OPENING DATE:
BID OPENING LOCATION:
TABULATION BY:
TABULATION DATE:
LJA JOB NO.

CONSTRUCTION OF WATER, SANITARY SEWER AND DRAINAGE FACILITIES & PAVING AND APPURTENANCES TO SERVE MILL CREEK ESTATES S
 TO SERVE MILL CREEK ESTATES SECTION 8
 MONTGOMERY COUNTY MUNICIPAL UTILITY DISTRICT NO. 165
 CITY OF MAGNOLIA E.T.J., MONTGOMERY COUNTY, TEXAS
 NOVEMBER 22, 2024
 LJA ENGINEERING, INC.
 E. MURPHY
 NOVEMBER 22, 2024
 1019-3081, 1019-3082 (9.2)

ITEM	DESCRIPTION	UNIT	QTY	1) FELLERS AND CLARK LP		2) LEXTON CONSTRUCTION, LLC		3) PRECISE SERVICES INC.		
				UNIT COST	TOTAL COST	UNIT COST	TOTAL COST	UNIT COST	TOTAL COST	
20	AS-BUILT SURVEY, LJA SURVEY, INC. TO PROVIDE TOPOGRAPHIC SURVEY, INCLUDES ELEVATIONS AT ALL LOT CORNERS, BUILDING LINES, ALL FOUR CORNERS OF THE BUILDING PAD, SIDE LOT SWALE FLOWLINES AND TOP OF CURB IN A 3D CAD FILE FORMAT, CONTACT CAMERON LOWE AT 713.953.5212, COMPLETE IN PLACE	LS	1	\$5,500.00	\$5,500.00	\$5,500.00	\$5,500.00	\$5,500.00	\$5,500.00	
21	STORMWATER POLLUTION PREVENTION PLAN COMPLIANCE AND INSPECTIONS, COMPLETE IN PLACE	LS	1	\$2,000.00	\$2,000.00	\$2,500.00	\$2,500.00	\$2,000.00	\$2,000.00	
22	STABILIZED CONSTRUCTION ENTRANCE, INCLUDES INSTALLATION, MAINTENANCE AND REMOVAL, COMPLETE IN PLACE	LS	1	\$1,409.45	\$1,409.45	\$3,100.00	\$3,100.00	\$1,850.00	\$1,850.00	
MISCELLANEOUS ITEMS SUBTOTAL:					\$204,912.65		\$190,270.00		\$222,070.00	
<u>BIDDING SUMMARY</u>										
SUBTOTAL WATER ITEMS						\$229,989.20		\$238,464.00		\$299,249.00
SUBTOTAL SANITARY SEWER ITEMS						\$245,616.85		\$303,757.72		\$362,551.20
SUBTOTAL STORM SEWER ITEMS						\$450,581.55		\$434,729.00		\$532,941.50
SUBTOTAL PAVING ITEMS						\$659,399.75		\$679,393.75		\$622,983.55
SUBTOTAL MISCELLANEOUS ITEMS						\$204,912.65		\$190,270.00		\$222,070.00
TOTAL AMOUNT BASE BID						\$1,790,500.00		\$1,846,614.47		\$2,039,795.25



BID TABULATION FOR:

SECTION 8

BID OPENING DATE:
BID OPENING LOCATION:
TABULATION BY:
TABULATION DATE:
LJA JOB NO.

ITEM	DESCRIPTION	UNIT	QTY
WATER ITEMS			
1	8" PVC WATER PIPE, C-900, DR 18, CLASS 235, ALL DEPTHS, INCLUDES ALL FITTINGS (TEES, BENDS, TRACER WIRE, CONNECTORS, THRUST BLOCKS, REDUCERS, ETC), BLUE IN COLOR, COMPLETE IN PLACE	LF	2940
2	TRENCH SAFETY SYSTEM, ALL DEPTHS, COMPLETE IN PLACE	LF	2940
3	FLUSHING VALVE UNIT, ALL DEPTHS, INCLUDES APPROPRIATE TEE AND RESTRAINED JOINT FITTINGS, 6" VALVE & BOX 6" LEAD AND FIRE HYDRANT, BLIND FLANGES, THRUST BLOCKS, AND ADJUSTMENTS AS NECESSARY, COMPLETE IN PLACE	EA	7
4	8" AWWA GATE VALVE AND BOX, ALL DEPTHS, INCLUDES MARKER, OPEN COUNTERCLOCKWISE, COMPLETE IN PLACE	EA	8
5	CONNECT PROPOSED 8" WATER LINE TO EXISTING 8" WATER LINE INCLUDES REMOVING EXISTING PLUG AND CLAMP AND BLOW-OFF VALVE AND ALL NECESSARY ADAPTERS AND CONNECTORS, WET CONNECTION, COMPLETE IN PLACE	EA	1
6	SHORT SIDE SINGLE SERVICE LEAD, 1" (CTS POLYETHYLENE, SDR-9) WATER SERVICE, CURB STOP, MARKER, AND ALL NECESSARY CONNECTORS, PLUGS AND TAPS, CONTRACTOR SHALL TERMINATE ALL LEADS WITH 3/4" THREAD TO METER ADAPTOR, COMPLETE IN PLACE	EA	39
7	LONG SIDE SINGLE SERVICE LEAD, 1" (CTS POLYETHYLENE, SDR-9) WATER SERVICE, CURB STOP, MARKER, AND ALL NECESSARY CONNECTORS, PLUGS AND TAPS, CONTRACTOR SHALL TERMINATE ALL LEADS WITH 3/4" THREAD TO METER ADAPTOR, COMPLETE IN PLACE	LF	2000
8	METER BOX, (DFW PLASTICS, INC., MODEL NO. DFW 1300.12IT), OR APPROVED EQUAL, COMPLETE IN PLACE	EA	75
9	PLUG AND CLAMP WITH 2" BLOW-OFF VALVE AND BOX, ALL SIZES AND DEPTHS, INCLUDES MARKER, COMPLETE IN PLACE	EA	2
WATER ITEMS SUBTOTAL:			
SANITARY SEWER ITEMS			
1	8" PVC SEWER PIPE, ASTM D-2241, SDR 26, 0' – 8' CUT, GREEN IN COLOR, CONNECTOR, INCLUDES TRACER WIRE, COMPLETE IN PLACE	LF	610
2	8" PVC SEWER PIPE, ASTM D-2241, SDR 26, 8' – 12' CUT, GREEN IN COLOR, CONNECTOR, INCLUDES TRACER WIRE, COMPLETE IN PLACE	LF	1247
3	8" PVC SEWER PIPE, ASTM D-2241, SDR 26, 12' – 16' CUT, GREEN IN COLOR, CONNECTOR, INCLUDES TRACER WIRE, COMPLETE IN PLACE	LF	496
4	8" PVC SEWER PIPE, ASTM D-2241, SDR 26, 16' – 20' CUT, GREEN IN COLOR, CONNECTOR, INCLUDES TRACER WIRE, COMPLETE IN PLACE	LF	319
5	PRECAST STANDARD SANITARY SEWER MANHOLE 4-FOOT DIAMETER FOR 6"-24" SANITARY SEWER PIPES, 0'-8" DEPTH, INCLUDES PLASTIC INFLOW PROTECTORS, PROTECTIVE INTERIOR COATING (XYPEX ADMIX C-1000R, OR APPROVED EQUAL), TRACER WIRE AND ADJUSTMENTS, COMPLETE IN PLACE	EA	19
6	EXTRA-DEPTH FOR 4-FOOT DIAMETER SANITARY SEWER MANHOLE, (GREATER THAN 8' DEPTH), COMPLETE IN PLACE	VF	81
7	"SHORT SIDE" DOUBLE OR SINGLE 6" PVC PIPE SERVICE LEADS, ASTM D-2241, SDR 26, ALL DEPTHS, INCLUDING PIPE, CEMENT STABILIZED SAND BACKFILL, WYE, PLUG, MARKER, ANY NECESSARY FITTINGS, STACKS, RISERS, TRACER WIRE, ETC., GREEN IN COLOR, COMPLETE IN PLACE	EA	14

BID TABULATION FOR:

SECTION 8

BID OPENING DATE:

BID OPENING LOCATION:

TABULATION BY:

TABULATION DATE:

LJA JOB NO.

ITEM	DESCRIPTION	UNIT	QTY
8	"LONG SIDE" DOUBLE OR SINGLE 6" PVC PIPE SERVICE LEADS, ASTM D-2241, SDR 26, ALL DEPTHS, INCLUDING PIPE, CEMENT STABILIZED SAND BACKFILL, WYE, PLUG, MARKER, ANY NECESSARY FITTINGS, STACKS, RISERS, TRACER WIRE, ETC., GREEN IN COLOR, COMPLETE IN PLACE	LF	1015
9	TRENCH SAFETY SYSTEM, ALL DEPTHS, COMPLETE IN PLACE	LF	3687
10	STANDARD SANITARY MANHOLE DROP, COMPLETE IN PLACE	EA	2
11	SANITARY MANHOLE DROP EXTRA DEPTH OVER 3', COMPLETE IN PLACE	EA	11
12	CORE INTO EXISTING SANITARY SEWER MANHOLE AND CONNECT PROPOSED 8" SANITARY SEWER, INCLUDES BYPASS PUMPING AS NECESSARY, COMPLETE IN PLACE	EA	1
13	PLUG FOR SANITARY SEWER PIPE, ALL SIZES, ALL DEPTHS, COMPLETE IN PLACE	EA	1
14	POST-CONSTRUCTION CLEANING AND VIDEOTAPING OF SANITARY SEWER TRUNK LINE TO BE PROVIDED TO ENGINEER FOR ACCEPTANCE, COMPLETE IN PLACE	LF	2672
SANITARY SEWER ITEMS SUBTOTAL:			
STORM SEWER ITEMS			
1	24" RCP, STORM SEWER, ASTM C-76, CLASS III, ALL CUTS, COMPLETE IN PLACE	LF	1200
2	30" RCP, STORM SEWER, ASTM C-76, CLASS III, ALL CUTS, COMPLETE IN PLACE	LF	250
3	36" RCP, STORM SEWER, ASTM C-76, CLASS III, ALL CUTS, COMPLETE IN PLACE	LF	240
4	42" RCP, STORM SEWER, ASTM C-76, CLASS III, ALL CUTS, COMPLETE IN PLACE	LF	36
5	48" RCP, STORM SEWER, ASTM C-76, CLASS III, ALL CUTS, COMPLETE IN PLACE	LF	516
6	54" RCP, STORM SEWER, ASTM C-76, CLASS III, ALL CUTS, COMPLETE IN PLACE	LF	98
7	REINFORCED CONCRETE PRECAST OR REINFORCED CONCRETE CAST-IN-PLACE TYPE "C" MANHOLE FOR 42" STORM SEWER AND SMALLER, ALL DEPTHS, INCLUDES ADJUSTMENTS, COMPLETE IN PLACE	EA	11
8	REINFORCED CONCRETE PRECAST OR REINFORCED CONCRETE CAST-IN-PLACE TYPE "C" MANHOLE WITH TYPE "E" INLET TOP OPEN ALL SIDES, FOR 42" STORM SEWER AND SMALLER, ALL DEPTHS, INCLUDES ADJUSTMENTS, COMPLETE IN PLACE	EA	1
9	REINFORCED CONCRETE PRECAST OR REINFORCED CONCRETE CAST-IN-PLACE TYPE "C" MANHOLE FOR 48" STORM SEWER AND LARGER, ALL DEPTHS, INCLUDES ADJUSTMENTS, COMPLETE IN PLACE	EA	5
10	STAGE I – REINFORCED CONCRETE PRECAST STANDARD CURB INLET, ALL DEPTHS, INCLUDES INLET PROTECTION BARRIER FOR STAGE I INLETS, COMPLETE IN PLACE	EA	19
11	STAGE II – REINFORCED CONCRETE PRECAST OR REINFORCED CONCRETE CAST-IN-PLACE STANDARD CURB INLET, COMPLETE IN PLACE	EA	19
12	TRENCH SAFETY SYSTEM, ALL DEPTHS, COMPLETE IN PLACE	LF	2340
13	BREAK INTO EXISTING STORM MANHOLE AND CONNECT STORM SEWER, ALL SIZES, ALL DEPTHS, COMPLETE IN PLACE	EA	3

BID TABULATION FOR:

SECTION 8

BID OPENING DATE:
BID OPENING LOCATION:
TABULATION BY:
TABULATION DATE:
LJA JOB NO.

ITEM	DESCRIPTION	UNIT	QTY
14	REMOVE EXISTING E-INLET TOP AND REPLACE WITH TYPE "C" STORM SEWER MANHOLE TOP, COMPLETE IN PLACE	EA	2
15	REGRADE EXISTING 2' BOTTOM WIDTH SWALE TO E-INLET, COMPLETE IN PLACE	LF	125

STORM SEWER ITEMS SUBTOTAL:

PAVING ITEMS

1	6-INCH REINFORCED CONCRETE PAVEMENT (3,000 PSI / 5 SACK CEMENT PER CUBIC YARD), COMPLETE IN PLACE	SY	8288
2	6 INCH STABILIZED SUBGRADE FOR 6-INCH PAVEMENT (MANIPULATION), COMPLETE IN PLACE	SY	8921
3	4-INCH X 12-INCH REINFORCED CONCRETE CURB (3,000 PSI), COMPLETE IN PLACE	LF	1673
4	6-INCH REINFORCED CONCRETE CURB (3,000 PSI), COMPLETE IN PLACE	LF	3956
5	HYDRATED LIME FOR SUBGRADE, (2% BY DRY WEIGHT) AS REQUIRED BY SOIL CONDITIONS AND APPROVED BY GEOTECHNICAL ENGINEER, COMPLETE IN PLACE	TON	88
6	FLY ASH FOR SUBGRADE, (8% BY DRY UNITY WEIGHT) AS REQUIRED BY SOIL CONDITIONS AND APPROVED BY GEOTECHNICAL ENGINEER, COMPLETE IN PLACE	TON	353
7	FINAL LOT AND RESERVE GRADING, COMPLETE IN PLACE	LS	1
8	REMOVAL AND DISPOSAL OF EXISTING BARRICADE, COMPLETE IN PLACE	EA	1
9	PERMANENT STANDARD TYPE III BARRICADE, COMPLETE IN PLACE	EA	2
10	PERMANENT TRAFFIC CONTROL DEVICES, (INCLUDING ALL TRAFFIC BUTTONS, PERMANENT STRIPING, AND PERMANENT SIGNAGE), COMPLETE IN PLACE	LS	1
11	STANDARD PAVEMENT HEADER, COMPLETE IN PLACE	LF	48
12	ROADWAY, LOT AND RESERVE EXCAVATION AND EMBANKMENT, INCLUDES STRIPPINGS, STOCKPILING OF STRIPPINGS, AND REAPPLICATION OF STRIPPINGS TO APPLICABLE AREAS, COMPLETE IN PLACE	CY	3100
13	EXCAVATION AND EMBANKMENT OF SIDE LOT SWALES, INCLUDES STRIPPINGS, STOCKPILING OF STRIPPINGS, AND REAPPLICATION OF STRIPPINGS TO APPLICABLE AREAS, COMPLETE IN PLACE	LF	7200
14	DUAL 6" SCHEDULE 40 PVC IRRIGATION SLEEVES (HORIZONTAL SLEEVE ONLY), NO SEPARATE PAY FOR VERTICAL SLEEVE, COMPLETE IN PLACE	LF	28

PAVING ITEMS SUBTOTAL:

MISCELLANEOUS ITEMS

1	ADDITIONAL DUCTILE IRON FITTINGS, (TO BE USED ONLY AT THE WRITTEN DIRECTION OF THE ENGINEER), COMPLETE IN PLACE	TON	2
2	REINFORCED FILTER FABRIC FENCE, COMPLETE IN PLACE	LF	100
3	CEMENT STABILIZED SAND, 1.5 SACKS OF CEMENT PER CUBIC YARD OF MIX, TO BE USED ONLY AT THE WRITTEN DIRECTION OF THE ENGINEER, COMPLETE IN PLACE	TON	1

BID TABULATION FOR:

SECTION 8

BID OPENING DATE:
BID OPENING LOCATION:
TABULATION BY:
TABULATION DATE:
LJA JOB NO.

ITEM	DESCRIPTION	UNIT	QTY
4	CEMENT STABILIZED SAND, 2 SACKS OF CEMENT PER CUBIC YARD OF MIX, TO BE USED ONLY AT THE WRITTEN DIRECTION OF THE ENGINEER, COMPLETE IN PLACE	TON	1
5	STAGE II INLET PROTECTION BARRIERS (BURLAP BAG BARRIER), COMPLETE IN PLACE	EA	10
6	CLEARING AND GRUBBING, INCLUDES HAULING DEBRIS OFF-SITE, TO BE USED ONLY AT THE WRITTEN DIRECTION OF THE ENGINEER, COMPLETE EIN PLACE	AC	1
7	FLY ASH, COMPLETE IN PLACE	TON	50
8	UTILITY SPOILS (COMPACTED TO 95% STANDARD PROCTOR DENSITY) TO BE USED ON-SITE, INCLUDES HAULING, PLACEMENT AND COMPACTION, COMPLETE IN PLACE	LS	1
9	ADDITIONAL COST TO HAUL AND DISPOSE OF UTILITY SPOILS OFF-SITE BUT WITHIN DEVELOPMENT, NO MORE THAN 3,500 FEET, (TO BE USED ONLY AT THE WRITTEN DIRECTION OF THE ENGINEER), COMPLETE IN PLACE	CY	1000
10	SURFACE WATER CONTROL, INCLUDES PUMPING REQUIRED TO CONSTRUCT PROPOSED PROJECT, (TO BE USED ONLY AT THE WRITTEN DIRECTION OF THE ENGINEER), COMPLETE IN PLACE	LS	1
11	DEWATERING (GROUNDWATER CONTROL), INCLUDES CONVENTIONAL VACUUM TYPE WELL POINTS, INTERNAL SUMPS AND PUMPS, OR ANY TYPE OF PUMPING AS NECESSARY TO COMPLETE THE CONSTRUCTION OF THE PROJECT, (TO BE USED ONLY AT THE WRITTEN DIRECTION OF THE ENGINEER), COMPLETE IN PLACE	LF	2500
12	ADDITIONAL COST FOR BEDDING AND BACKFILL FOR UNSATISFACTORY SOIL CONDITIONS (WET SAND), (TO BE USED ONLY AT THE WRITTEN DIRECTION OF THE ENGINEER), COMPLETE IN PLACE	LF	2500
13	TEMPORARY TRAFFIC CONTROL DEVICES, INCLUDING ALL TRAFFIC BUTTONS, PAVEMENT STRIPING, STREET SIGNS AND TRAFFIC SIGNS, COMPLETE IN PLACE	LS	1
14	TRAFFIC BUTTONS, (TO BE USED ONLY AT THE WRITTEN DIRECTION OF THE ENGINEER), COMPLETE IN PLACE	EA	1
15	THERMOPLASTIC PAVEMENT MARKINGS, ALL WIDTHS, COMPLETE IN PLACE	LF	25
16	TURF ESTABLISHMENT OF SWALES AND AREAS STEEPER THAN 10:1, INCLUDES MOWING AND WATERING TO ACHIEVE 90% HOMOGENEOUS VEGETATION TO ACCEPT PROJECT FOR FINAL PAYMENT, COMPLETE IN PLACE	AC	1
17	BROADCAST SEEDING OF RESERVES, INCLUDES MOWING AND WATERING TO ACHIEVE 90% HOMOGENEOUS VEGETATION TO ACCEPT PROJECT FOR FINAL PAYMENT, (TO BE USED ONLY AT WRITTEN DIRECTION OF THE ENGINEER), COMPLETE IN PLACE	AC	13
18	ONE-TIME CONSTRUCTION STAKING TO BE PROVIDED BY LJA SURVEYING, INC. INCLUDES CONSTRUCTION AND CONTROL STAKING OF THE WSD, CONTACT CAMERON LOWE AT 713.953.5212, COMPLETE IN PLACE	LS	1
19	CONSTRUCTION STAKING TO BE PROVIDED BY LJA SURVEYING, INC. INCLUDES CONSTRUCTION AND CONTROL STAKING OF THE FOR PAVING AND GRADING, CONTACT CAMERON LOWE AT 713.953.5212, COMPLETE IN PLACE	LS	1

BID TABULATION FOR:

SECTION 8

BID OPENING DATE:
BID OPENING LOCATION:
TABULATION BY:
TABULATION DATE:
LJA JOB NO.

ITEM	DESCRIPTION	UNIT	QTY
20	AS-BUILT SURVEY, LJA SURVEY, INC. TO PROVIDE TOPOGRAPHIC SURVEY, INCLUDES ELEVATIONS AT ALL LOT CORNERS, BUILDING LINES, ALL FOUR CORNERS OF THE BUILDING PAD, SIDE LOT SWALE FLOWLINES AND TOP OF CURB IN A 3D CAD FILE FORMAT, CONTACT CAMERON LOWE AT 713.953.5212, COMPLETE IN PLACE	LS	1
21	STORMWATER POLLUTION PREVENTION PLAN COMPLIANCE AND INSPECTIONS, COMPLETE IN PLACE	LS	1
22	STABILIZED CONSTRUCTION ENTRANCE, INCLUDES INSTALLATION, MAINTENANCE AND REMOVAL, COMPLETE IN PLACE	LS	1

MISCELLANEOUS ITEMS SUBTOTAL:

BIDDING SUMMARY

SUBTOTAL WATER ITEMS
SUBTOTAL SANITARY SEWER ITEMS
SUBTOTAL STORM SEWER ITEMS
SUBTOTAL PAVING ITEMS
SUBTOTAL MISCELLANEOUS ITEMS
TOTAL AMOUNT BASE BID

LJA Engineering, Inc.